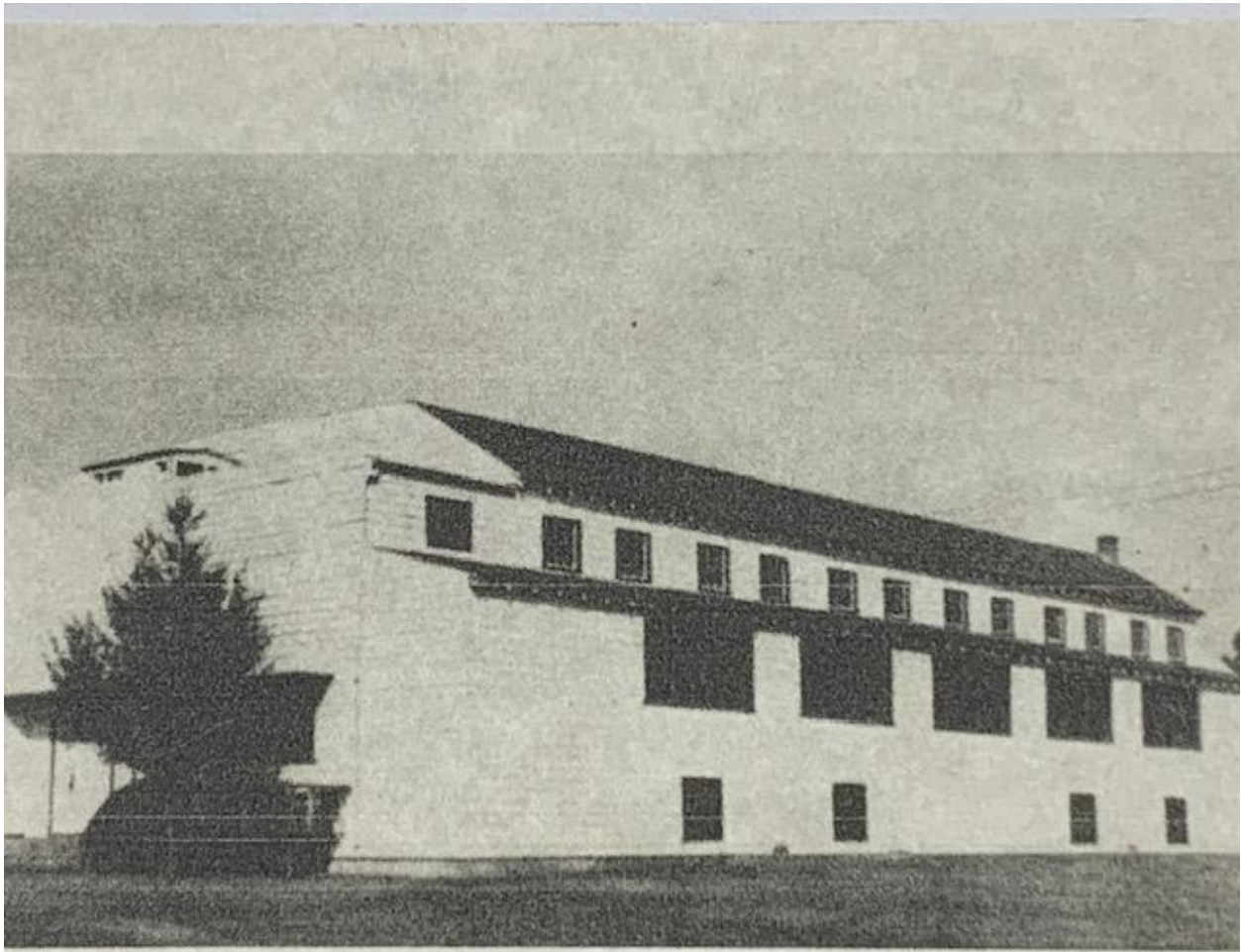


The Old Gym

1936-2021



The old Hemphill High School Gymnasium was constructed circa 1936 by the WPA (Works Progress Administration), a Great Depression era program that employed young men that were jobless. This program conducted numerous projects including the construction of the high school gym, the fieldstone (rock) fence that surrounds the Sabine County Courthouse and a renovation on the courthouse third floor. Some of the large timbers in the roof support trusses were cut from standing virgin longleaf pine that started growing in the late 1700's and early 1800's in Sabine County. The old Know/Temple Lumber Company mill located in East Mayfield (Western section of Hemphill) that burned in 1938 processed most of the timbers and lumber used in the gym construction. In its approximately seventy five years of use the gym has witnessed numerous Hemphill High School graduations, thousands of physical education classes for both high school and middle school, numerous community activities, special programs for students of all grades and UIL (University Interscholastic League) competition in basketball and volleyball.